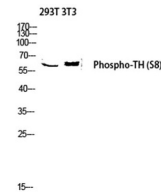


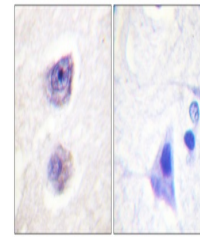
Product Datasheet

TH (phospho-Ser8) antibody (orb767265)

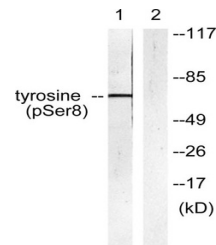
Description	Rabbit polyclonal antibody to TH (phospho-Ser8)
Species/Host	Rabbit
Reactivity	Rat
Conjugation	Unconjugated
Tested Applications	ELISA, IHC-P, WB
Immunogen	The antiserum was produced against synthesized peptide derived from mouse Tyrosine Hydroxylase around the phosphorylation site of Ser8. AA range:2-51
Preservatives	PBS with 0.02% sodium azide and 50% glycerol pH 7.4.
Concentration	1 mg/ml
Storage	Maintain refrigerated at 2-8°C for up to 2 weeks. For long term storage store at -20°C in small aliquots to prevent freeze-thaw cycles.
Note	For research use only
Isotype	IgG
Clonality	Polyclonal
MW	62
Expiration Date	12 months from date of receipt.



Western blot analysis of 293T 3T3 lysis ...



Immunohistochemistry analysis of paraffi...



Western blot analysis of lysates from He...