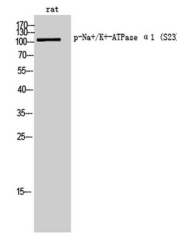


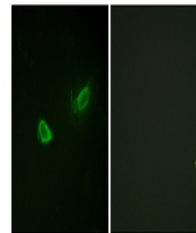
Product Datasheet

Na⁺/K⁺-ATPase alpha1 (phospho-Ser23) antibody (orb767263)

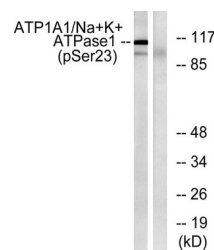
Description	Rabbit polyclonal antibody to Na ⁺ /K ⁺ -ATPase alpha1 (phospho-Ser23)
Species/Host	Rabbit
Reactivity	Rat
Conjugation	Unconjugated
Tested Applications	ELISA, IF, WB
Immunogen	The antiserum was produced against synthesized peptide derived from rat ATP1 alpha1/Na ⁺ K ⁺ ATPase1 around the phosphorylation site of Ser23. AA range:15-64
Preservatives	PBS with 0.02% sodium azide and 50% glycerol pH 7.4.
Concentration	1 mg/ml
Storage	Maintain refrigerated at 2-8°C for up to 2 weeks. For long term storage store at -20°C in small aliquots to prevent freeze-thaw cycles.
Note	For research use only
Isotype	IgG
Clonality	Polyclonal
MW	113
Expiration Date	12 months from date of receipt.



Western Blot analysis of rat cells using...



Immunofluorescence analysis of NIH/3T3 C...



Western blot analysis of lysates from ra...