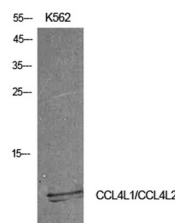


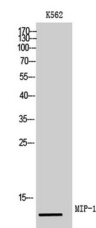
Product Datasheet

MIP-1b antibody (orb767252)

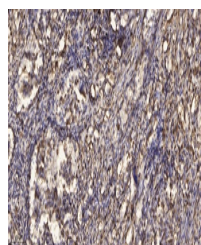
Description	Rabbit polyclonal antibody to MIP-1b
Species/Host	Rabbit
Reactivity	Human
Conjugation	Unconjugated
Tested Applications	ELISA, WB
Immunogen	The antiserum was produced against synthesized peptide derived from the Internal region of human CCL4L1/CCL4L2. AA range:31-80
Preservatives	PBS with 0.02% sodium azide and 50% glycerol pH 7.4.
Concentration	1 mg/ml
Storage	Store at -20°C. Avoid repeated freeze-thaw cycles.
Note	For research use only
Isotype	IgG
Clonality	Polyclonal
MW	11
Expiration Date	12 months from date of receipt.



Western Blot analysis of K562 cells usin...



Western Blot analysis of K562 cells usin...



Immunohistochemical analysis of paraffin...