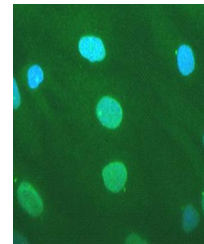


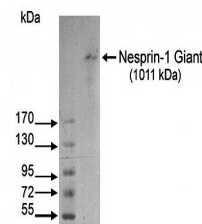
## Product Datasheet

### Nesprin1 antibody (orb76725)

<b>Description</b>	Mouse monoclonal antibody to Nesprin1
<b>Species/Host</b>	Mouse
<b>Reactivity</b>	Human, Mouse, Rabbit, Rat
<b>Conjugation</b>	Unconjugated
<b>Tested Applications</b>	ICC, WB
<b>Immunogen</b>	Recombinant full length Nesprin 1(Human)
<b>Target</b>	Nesprin 1
<b>Preservatives</b>	Purified antibody (from supernatant) containing PBS + 0.1% sodium azide
<b>Concentration</b>	1mg/ml
<b>Note</b>	For research use only
<b>Application notes</b>	Sp2/0
<b>Isotype</b>	IgG1
<b>Clonality</b>	Monoclonal
<b>Uniprot ID</b>	<a href="#">Q8NF91</a>
<b>Entrez</b>	<a href="#">499010</a> , <a href="#">23345</a> , <a href="#">64009</a>
<b>Dilution Range</b>	Optimal antibody dilution should be determined by titration, however as a guideline try; ICC/IF: 1/200. WB: 1/400 - 1/800. Predicted molecular weight: 1011 kDa
<b>Expiration Date</b>	12 months from date of receipt.



Confocal immunofluorescence analysis of ...



Western blot analysis of extracts of nor...