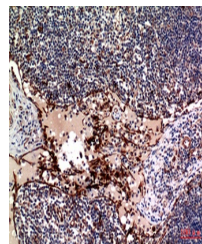


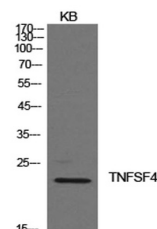
Product Datasheet

Ox40L antibody (orb767225)

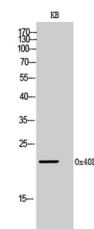
Description	Rabbit polyclonal antibody to Ox40L
Species/Host	Rabbit
Reactivity	Human
Conjugation	Unconjugated
Tested Applications	ELISA, IHC-P, WB
Immunogen	The antiserum was produced against synthesized peptide derived from the Internal region of human TNFSF4. AA range:31-80
Preservatives	PBS with 0.02% sodium azide and 50% glycerol pH 7.4.
Concentration	1 mg/ml
Storage	Store at -20°C. Avoid repeated freeze-thaw cycles.
Note	For research use only
Isotype	IgG
Clonality	Polyclonal
MW	21
Expiration Date	12 months from date of receipt.



Immunohistochemical analysis of paraffin...



Western Blot analysis of KB cells using ...



Western Blot analysis of KB cells using ...