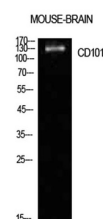


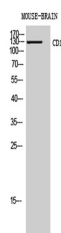
## Product Datasheet

### CD101 antibody (orb767205)

<b>Description</b>	Rabbit polyclonal antibody to CD101
<b>Species/Host</b>	Rabbit
<b>Reactivity</b>	Human
<b>Conjugation</b>	Unconjugated
<b>Tested Applications</b>	ELISA, WB
<b>Immunogen</b>	The antiserum was produced against synthesized peptide derived from the Internal region of human CD101. AA range:731-780
<b>Preservatives</b>	PBS with 0.02% sodium azide and 50% glycerol pH 7.4.
<b>Concentration</b>	1 mg/ml
<b>Storage</b>	Store at -20°C. Avoid repeated freeze-thaw cycles.
<b>Note</b>	For research use only
<b>Isotype</b>	IgG
<b>Clonality</b>	Polyclonal
<b>MW</b>	130
<b>Expiration Date</b>	12 months from date of receipt.



Western Blot analysis of mouse brain cell...



Western Blot analysis of MOUSE-BRAIN cell...