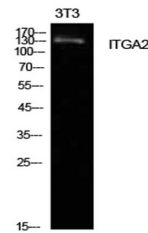


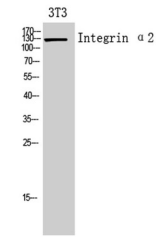
Product Datasheet

Integrin alpha 2 antibody (orb767193)

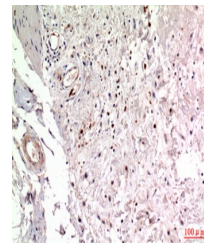
Description	Rabbit polyclonal antibody to Integrin alpha 2
Species/Host	Rabbit
Reactivity	Human, Mouse, Rat
Conjugation	Unconjugated
Tested Applications	ELISA, IHC-P, WB
Immunogen	The antiserum was produced against synthesized peptide derived from the C-terminal region of human ITGA2. AA range:1081-1130
Preservatives	PBS with 0.02% sodium azide and 50% glycerol pH 7.4.
Concentration	1 mg/ml
Storage	Maintain refrigerated at 2-8°C for up to 2 weeks. For long term storage store at -20°C in small aliquots to prevent freeze-thaw cycles.
Note	For research use only
Isotype	IgG
Clonality	Polyclonal
MW	130
Expiration Date	12 months from date of receipt.



Western Blot analysis of NIH-3T3 cells u...



Western Blot analysis of 3T3 cells using...



Immunohistochemical analysis of paraffin...