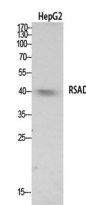


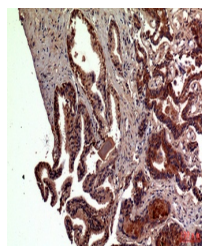
Product Datasheet

RSAD2 antibody (orb767139)

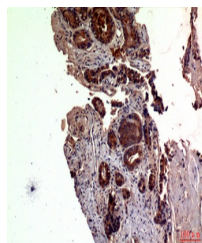
Description	Rabbit polyclonal antibody to RSAD2
Species/Host	Rabbit
Reactivity	Human
Conjugation	Unconjugated
Tested Applications	ELISA, IHC-P, WB
Immunogen	The antiserum was produced against synthesized peptide derived from the N-terminal region of human RSAD2. AA range:21-70
Preservatives	PBS with 0.02% sodium azide and 50% glycerol pH 7.4.
Concentration	1 mg/ml
Storage	Store at -20°C. Avoid repeated freeze-thaw cycles.
Note	For research use only
Isotype	IgG
Clonality	Polyclonal
MW	42
Expiration Date	12 months from date of receipt.



Western Blot analysis of HepG2 cells usi...



Immunohistochemical analysis of paraffin...



Immunohistochemical analysis of paraffin...