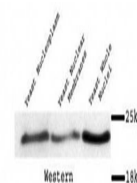


Product Datasheet

Mad2p antibody (orb76713)

Description	Rabbit monoclonal antibody to Mad2p
Species/Host	Rabbit
Reactivity	Human, Yeast
Conjugation	Unconjugated
Tested Applications	ICC, WB
Immunogen	Recombinant bacterial His6-fusion protein (<i>S. cerevisiae</i>)
Target	Mad2
Preservatives	Unpurified antiserum containing 0.1% sodium azide;
Note	For research use only
Clonality	Monoclonal
Dilution Range	Optimal antibody dilution should be determined by titration, however as a guideline try; WB: 1/100. Detects a band of approximately 23 kDa
Expiration Date	12 months from date of receipt.



Western blot analysis of yeast nuclear a...