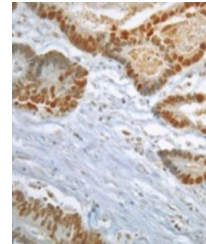


## Product Datasheet

### Mad2L1 antibody (orb76711)

<b>Description</b>	Mouse monoclonal antibody to Mad2L1
<b>Species/Host</b>	Mouse
<b>Reactivity</b>	Human
<b>Conjugation</b>	Unconjugated
<b>Tested Applications</b>	IHC-P, IP, WB
<b>Immunogen</b>	Recombinant human Mad2L1
<b>Target</b>	Mad2L1
<b>Preservatives</b>	Purified antibody (from supernatant) containing PBS 0.09% sodium azide
<b>Concentration</b>	1mg/ml
<b>Note</b>	For research use only
<b>Isotype</b>	IgG1
<b>Clonality</b>	Monoclonal
<b>Uniprot ID</b>	<a href="#">Q13257</a>
<b>Entrez</b>	<a href="#">4085</a>
<b>Dilution Range</b>	Optimal antibody dilution should be determined by titration, however as a guideline try; WB: Use a concentration of 2 µg/ml. Detects a band of approximately 25 kDa (predicted molecular weight: 24.6 kDa). IP: Use a concentration of 5 µg/ml
<b>Expiration Date</b>	12 months from date of receipt.



Immunohistochemical analysis of formalin...