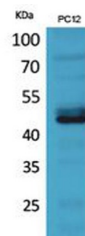


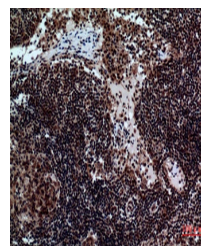
Product Datasheet

NKp44 antibody (orb767086)

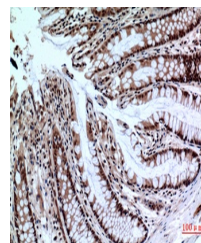
Description	Rabbit polyclonal antibody to NKp44
Reactivity	Human, Mouse, Rat
Conjugation	Unconjugated
Tested Applications	ELISA, IHC-P, WB
Immunogen	The antiserum was produced against synthesized peptide derived from the Internal region of human NCR2. AA range:61-110
Preservatives	PBS with 0.02% sodium azide and 50% glycerol pH 7.4.
Concentration	1 mg/ml
Storage	Maintain refrigerated at 2-8°C for up to 2 weeks. For long term storage store at -20°C in small aliquots to prevent freeze-thaw cycles.
Note	For research use only
Isotype	IgG
Clonality	Polyclonal
Source	Rabbit
MW	44
Dilution Range	Western Blot: 1/500 - 1/2000. IHC-p: 1/100-1/300. ELISA: 1/20000. Not yet tested in other applications.
Expiration Date	12 months from date of receipt.



Western Blot analysis of PC-12 cells using NKp44 antibody.



Immunohistochemical analysis of paraffin-embedded tissue using NKp44 antibody.



Immunohistochemical analysis of paraffin-embedded tissue using NKp44 antibody.