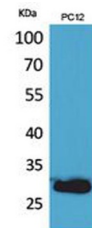


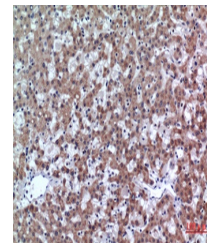
Product Datasheet

CD200 antibody (orb767079)

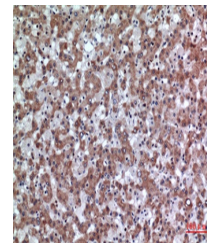
Description	Rabbit polyclonal antibody to CD200
Species/Host	Rabbit
Reactivity	Human
Conjugation	Unconjugated
Tested Applications	ELISA, IHC-P, WB
Immunogen	The antiserum was produced against synthesized peptide derived from the Internal region of human CD200. AA range:171-220
Preservatives	PBS with 0.02% sodium azide and 50% glycerol pH 7.4.
Concentration	1 mg/ml
Storage	Maintain refrigerated at 2-8°C for up to 2 weeks. For long term storage store at -20°C in small aliquots to prevent freeze-thaw cycles.
Note	For research use only
Isotype	IgG
Clonality	Polyclonal
MW	31
Expiration Date	12 months from date of receipt.



Western Blot analysis of PC12 cells using CD200 antibody.



Immunohistochemical analysis of paraffin-embedded tissue showing brown staining.



Immunohistochemical analysis of paraffin-embedded tissue showing brown staining.