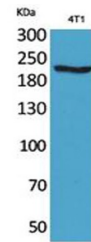


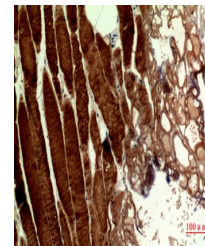
Product Datasheet

MYH-pan antibody (orb767032)

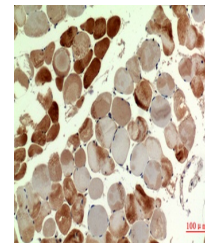
Description	Rabbit polyclonal antibody to MYH-pan
Species/Host	Rabbit
Reactivity	Human, Mouse, Rat
Conjugation	Unconjugated
Tested Applications	ELISA, IHC-P, WB
Immunogen	The antiserum was produced against synthesized peptide derived from human MYH-pan around the non-acetylation site of Lys1394. AA range:1351-1400
Preservatives	PBS with 0.02% sodium azide and 50% glycerol pH 7.4.
Concentration	1 mg/ml
Storage	Maintain refrigerated at 2-8°C for up to 2 weeks. For long term storage store at -20°C in small aliquots to prevent freeze-thaw cycles.
Note	For research use only
Isotype	IgG
Clonality	Polyclonal
MW	225
Expiration Date	12 months from date of receipt.



Western Blot analysis of 4T1 cells using...



Immunohistochemical analysis of paraffin...



Immunohistochemical analysis of paraffin...