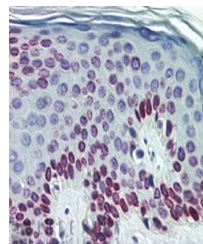


Product Datasheet

Lamin C antibody (orb76703)

Description	Rabbit monoclonal antibody to Lamin C
Species/Host	Rabbit
Reactivity	Human, Mouse, Rat
Conjugation	Unconjugated
Tested Applications	FC, ICC, IHC-Fr, IHC-P, WB
Immunogen	A peptide made from the last 8 amino acids of lamin C, including an N-terminal lysine as a linker (KHHVSGSRR), coupled to KLH
Target	Lamin C
Preservatives	Purified antiserum containing PBS 0.1% sodium azide;
Note	For research use only
Clonality	Monoclonal
Dilution Range	Optimal antibody dilution should be determined by titration, however as a guideline try; WB: 1:100 IHC-P: 1:50-1:500
Expiration Date	12 months from date of receipt.



Immunohistochemical analysis of formalin...