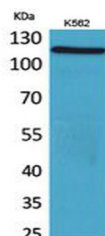


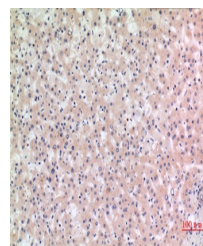
Product Datasheet

Cryopyrin antibody (orb766987)

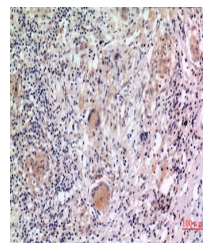
Description	Rabbit polyclonal antibody to Cryopyrin
Species/Host	Rabbit
Reactivity	Human
Conjugation	Unconjugated
Tested Applications	ELISA, IHC-P, WB
Immunogen	The antiserum was produced against synthesized peptide derived from the Internal region of human NLRP3. AA range:511-560
Preservatives	PBS with 0.02% sodium azide and 50% glycerol pH 7.4.
Concentration	1 mg/ml
Storage	Store at -20°C. Avoid repeated freeze-thaw cycles.
Note	For research use only
Isotype	IgG
Clonality	Polyclonal
MW	115
Expiration Date	12 months from date of receipt.



Western Blot analysis of K562 cells usin...



Immunohistochemical analysis of paraffin...



Immunohistochemical analysis of paraffin...