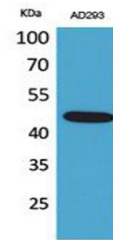


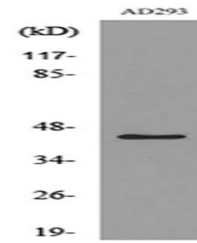
Product Datasheet

SCYL1BP1 antibody (orb766974)

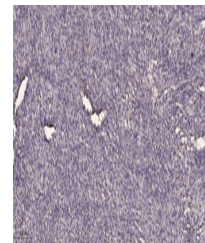
Description	Rabbit polyclonal antibody to SCYL1BP1
Species/Host	Rabbit
Reactivity	Human, Mouse, Rat
Conjugation	Unconjugated
Tested Applications	ELISA, WB
Immunogen	The antiserum was produced against synthesized peptide derived from the N-terminal region of human GORAB. AA range:1-50
Preservatives	PBS with 0.02% sodium azide and 50% glycerol pH 7.4.
Concentration	1 mg/ml
Storage	Maintain refrigerated at 2-8°C for up to 2 weeks. For long term storage store at -20°C in small aliquots to prevent freeze-thaw cycles.
Note	For research use only
Isotype	IgG
Clonality	Polyclonal
MW	45
Expiration Date	12 months from date of receipt.



Western Blot analysis of AD293 cells usi...



Western blot analysis of lysate from AD2...



Immunohistochemical analysis of paraffin...