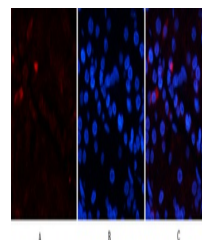


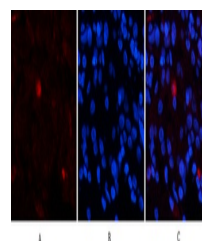
Product Datasheet

EPAS-1 antibody (orb766930)

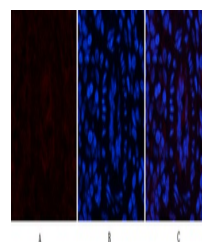
Description	Rabbit polyclonal antibody to EPAS-1
Species/Host	Rabbit
Reactivity	Human, Mouse, Rat
Conjugation	Unconjugated
Tested Applications	ELISA, IF, IHC-P, WB
Immunogen	Synthesized peptide derived from human EPAS-1 around the non-acetylation site of K385.
Preservatives	PBS with 0.02% sodium azide and 50% glycerol pH 7.4.
Concentration	1 mg/ml
Storage	Maintain refrigerated at 2-8°C for up to 2 weeks. For long term storage store at -20°C in small aliquots to prevent freeze-thaw cycles.
Note	For research use only
Isotype	IgG
Clonality	Polyclonal
MW	96
Expiration Date	12 months from date of receipt.



Immunofluorescence analysis of human-sto...



Immunofluorescence analysis of human-sto...



Immunofluorescence analysis of mouse-spl...