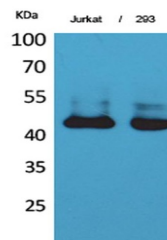


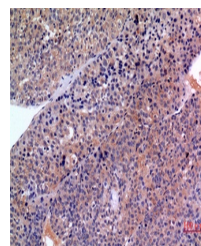
Product Datasheet

SCCA1/2 antibody (orb766915)

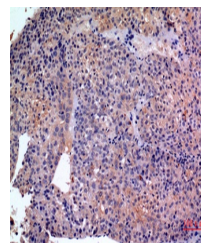
Description	Rabbit polyclonal antibody to SCCA1/2
Species/Host	Rabbit
Reactivity	Human
Conjugation	Unconjugated
Tested Applications	ELISA, IHC-P, WB
Immunogen	The antiserum was produced against synthesized peptide derived from the Internal region of human SERPINB3/4. AA range:111-160
Preservatives	PBS with 0.02% sodium azide and 50% glycerol pH 7.4.
Concentration	1 mg/ml
Storage	Maintain refrigerated at 2-8°C for up to 2 weeks. For long term storage store at -20°C in small aliquots to prevent freeze-thaw cycles.
Note	For research use only
Isotype	IgG
Clonality	Polyclonal
MW	45
Expiration Date	12 months from date of receipt.



Western Blot analysis of Jurkat, 293 cel...



Immunohistochemical analysis of paraffin...



Immunohistochemical analysis of paraffin...