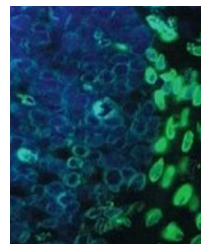


## Product Datasheet

### Lamin A antibody (orb76691)

<b>Description</b>	Mouse monoclonal antibody to Lamin A
<b>Species/Host</b>	Mouse
<b>Reactivity</b>	Human, Mouse
<b>Conjugation</b>	Unconjugated
<b>Tested Applications</b>	IF, IHC-Fr, IP, WB
<b>Immunogen</b>	Recombinant human lamin A
<b>Target</b>	Lamin A
<b>Preservatives</b>	Tissue culture supernatant containing 0.2M Tris/HCl pH 7.4 and 510
<b>Note</b>	For research use only
<b>Application notes</b>	Spleen cells from immunised BALB/c mice were fused with cells of the mouse SP2-0/Ag4 myeloma cell line
<b>Isotype</b>	IgG
<b>Clonality</b>	Monoclonal
<b>Dilution Range</b>	Optimal antibody dilution should be determined by titration, however as a guideline try; IP: Use neat. WB: 1/50. Predicted molecular weight: 74 kDa.
<b>Expiration Date</b>	12 months from date of receipt.



Confocal immunofluorescence analysis of ...