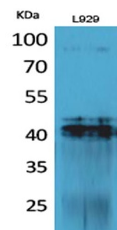


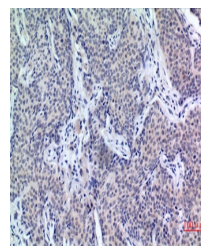
Product Datasheet

PDGF-D antibody (orb766904)

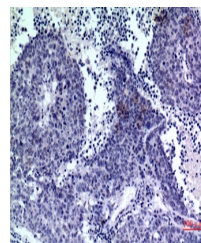
Description	Rabbit polyclonal antibody to PDGF-D
Species/Host	Rabbit
Reactivity	Human
Conjugation	Unconjugated
Tested Applications	ELISA, IHC-P, WB
Immunogen	The antiserum was produced against synthesized peptide derived from the C-terminal region of human PDGFD. AA range:311-360
Preservatives	PBS with 0.02% sodium azide and 50% glycerol pH 7.4.
Concentration	1 mg/ml
Storage	Maintain refrigerated at 2-8°C for up to 2 weeks. For long term storage store at -20°C in small aliquots to prevent freeze-thaw cycles.
Note	For research use only
Isotype	IgG
Clonality	Polyclonal
MW	42
Expiration Date	12 months from date of receipt.



Western Blot analysis of L929 cells using PDGF-D antibody.



Immunohistochemical analysis of paraffin-embedded tissue showing brown staining.



Immunohistochemical analysis of paraffin-embedded tissue showing purple staining.