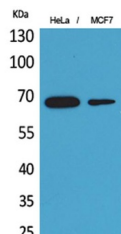


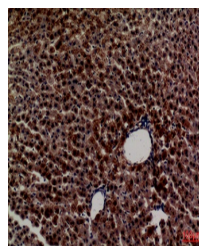
Product Datasheet

PEPCK-C antibody (orb766841)

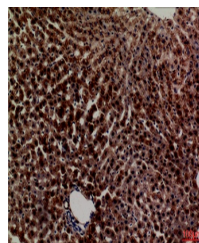
Description	Rabbit polyclonal antibody to PEPCK-C
Species/Host	Rabbit
Reactivity	Human, Mouse, Rat
Conjugation	Unconjugated
Tested Applications	ELISA, IHC-P, WB
Immunogen	The antiserum was produced against synthesized peptide derived from the Internal region of human PCK1. AA range:491-540
Preservatives	PBS with 0.02% sodium azide and 50% glycerol pH 7.4.
Concentration	1 mg/ml
Storage	Store at -20°C. Avoid repeated freeze-thaw cycles.
Note	For research use only
Isotype	IgG
Clonality	Polyclonal
MW	65
Expiration Date	12 months from date of receipt.



Western Blot analysis of HeLa, MCF7 cell...



Immunohistochemical analysis of paraffin...



Immunohistochemical analysis of paraffin...