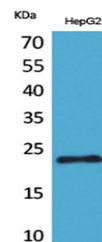


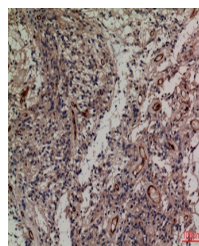
Product Datasheet

SNAP 23 antibody (orb766836)

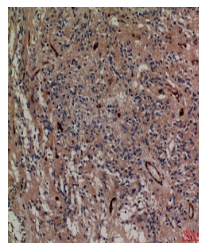
Description	Rabbit polyclonal antibody to SNAP 23
Reactivity	Human, Mouse, Rat
Conjugation	Unconjugated
Tested Applications	ELISA, IHC-P, WB
Immunogen	The antiserum was produced against synthesized peptide derived from the C-terminal region of human SNAP23. AA range:151-200
Preservatives	PBS with 0.02% sodium azide and 50% glycerol pH 7.4.
Concentration	1 mg/ml
Storage	Maintain refrigerated at 2-8°C for up to 2 weeks. For long term storage store at -20°C in small aliquots to prevent freeze-thaw cycles.
Note	For research use only
Isotype	IgG
Clonality	Polyclonal
Source	Rabbit
MW	25
Dilution Range	Western Blot: 1/500 - 1/2000. IHC-p: 1:100-300 ELISA: 1/20000. Not yet tested in other applications.
Expiration Date	12 months from date of receipt.



Western Blot analysis of HepG2 cells usi...



Immunohistochemical analysis of paraffin...



Immunohistochemical analysis of paraffin...