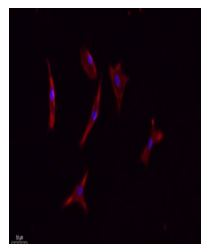


Product Datasheet

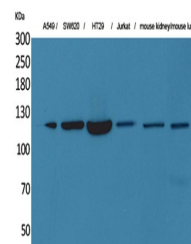
CD133 antibody (orb766797)

Description	Rabbit polyclonal antibody to CD133
Species/Host	Rabbit
Reactivity	Human, Mouse
Conjugation	Unconjugated
Tested Applications	ELISA, IHC-P, WB
Immunogen	The antiserum was produced against synthesized peptide derived from the N-terminal region of human PROM1. AA range:41-90
Preservatives	PBS with 0.02% sodium azide and 50% glycerol pH 7.4.
Concentration	1 mg/ml
Storage	Store at -20°C. Avoid repeated freeze-thaw cycles.
Note	For research use only
Isotype	IgG
Clonality	Polyclonal
MW	100
Expiration Date	12 months from date of receipt.

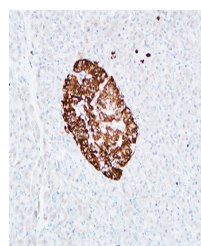


Immunofluorescence analysis of A549. 1,

...



Western Blot analysis of A549, SW620, HT...



Immunohistochemical analysis of paraffin...