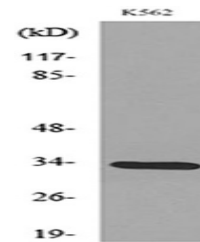


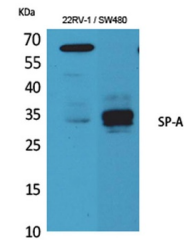
Product Datasheet

SP-A antibody (orb766796)

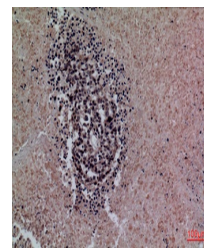
Description	Rabbit polyclonal antibody to SP-A
Species/Host	Rabbit
Reactivity	Human, Mouse, Rat
Conjugation	Unconjugated
Tested Applications	ELISA, IHC-P, WB
Immunogen	The antiserum was produced against synthesized peptide derived from the Internal region of human SFTPA1/2. AA range:141-190
Preservatives	PBS with 0.02% sodium azide and 50% glycerol pH 7.4.
Concentration	1 mg/ml
Storage	Store at -20°C. Avoid repeated freeze-thaw cycles.
Note	For research use only
Isotype	IgG
Clonality	Polyclonal
MW	34
Expiration Date	12 months from date of receipt.



Western blot analysis of lysate from K562...



Western Blot analysis of 22RV-1 and SW480...



Immunohistochemical analysis of paraffin...