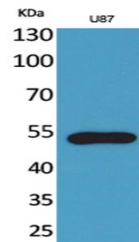


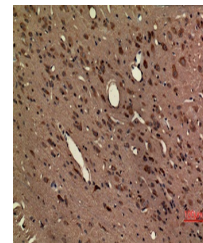
Product Datasheet

Fractalkine Receptor antibody (orb766717)

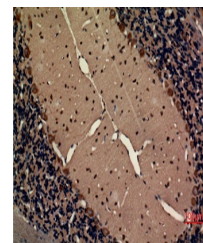
Description	Rabbit polyclonal antibody to Fractalkine Receptor
Species/Host	Rabbit
Reactivity	Human, Mouse, Rat
Conjugation	Unconjugated
Tested Applications	ELISA, IHC-P, WB
Immunogen	Synthesized peptide derived from Fractalkine Receptor . at AA range: 120-200
Preservatives	PBS with 0.02% sodium azide and 50% glycerol pH 7.4.
Concentration	1 mg/ml
Storage	Maintain refrigerated at 2-8°C for up to 2 weeks. For long term storage store at -20°C in small aliquots to prevent freeze-thaw cycles.
Note	For research use only
Isotype	IgG
Clonality	Polyclonal
MW	40
Expiration Date	12 months from date of receipt.



Western Blot analysis of U87 cells using...



Immunohistochemical analysis of paraffin...



Immunohistochemical analysis of paraffin...