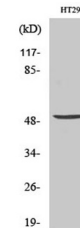


Product Datasheet

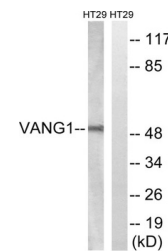
Vangl1 antibody (orb766559)

Description	Rabbit polyclonal antibody to Vangl1
Reactivity	Human, Mouse
Conjugation	Unconjugated
Tested Applications	ELISA, WB
Immunogen	The antiserum was produced against synthesized peptide derived from human VANGL1. AA range:301-350
Preservatives	PBS with 0.02% sodium azide and 50% glycerol pH 7.4.
Concentration	1 mg/ml
Storage	Maintain refrigerated at 2-8°C for up to 2 weeks. For long term storage store at -20°C in small aliquots to prevent freeze-thaw cycles.
Note	For research use only
Isotype	IgG
Clonality	Polyclonal
Source	Rabbit
MW	50
Dilution Range	Western Blot: 1/500 - 1/2000. ELISA: 1/20000. Not yet tested in other applications.
Expiration Date	12 months from date of receipt.

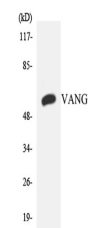


Western Blot analysis of various cells

u...



Western blot analysis of lysates from HT...



Western blot analysis of the lysates fro...