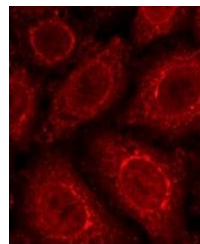


Product Datasheet

gp210 antibody (orb76637)

Description	Rabbit monoclonal antibody to gp210
Species/Host	Rabbit
Reactivity	Human, Monkey, Mouse, Rat
Conjugation	Unconjugated
Tested Applications	ICC, WB
Immunogen	Purified bacterial C-terminal fusion protein (residues 1865-1886)
Target	gp210
Preservatives	Unpurified antiserum containing 0.1 sodium azide
Note	For research use only
Clonality	Monoclonal
Dilution Range	Optimal antibody dilution should be determined by titration, however as a guideline try;WB: 1/1000. Predicted molecular weight: 210 kDa.ICC/IF: 1/100
Expiration Date	12 months from date of receipt.



Confocal immunofluorescence analysis of ...