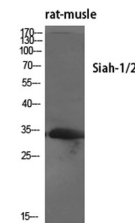


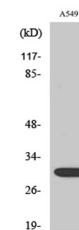
Product Datasheet

Siah-1/2 antibody (orb766317)

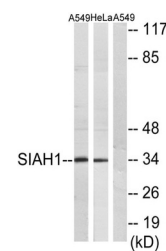
Description	Rabbit polyclonal antibody to Siah-1/2
Species/Host	Rabbit
Reactivity	Human, Mouse, Rat
Conjugation	Unconjugated
Tested Applications	ELISA, IF, IHC-P, WB
Immunogen	The antiserum was produced against synthesized peptide derived from human SIAH1. AA range:181-230
Preservatives	PBS with 0.02% sodium azide and 50% glycerol pH 7.4.
Concentration	1 mg/ml
Storage	Store at -20°C. Avoid repeated freeze-thaw cycles.
Note	For research use only
Isotype	IgG
Clonality	Polyclonal
MW	34
Expiration Date	12 months from date of receipt.



Western Blot analysis of various cells
U...



Western Blot analysis of HeLa cells
usin...



Western blot analysis of lysates from
A5...