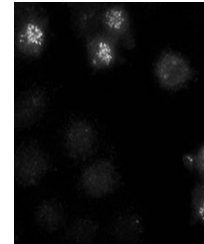


Product Datasheet

CENPE antibody (orb76599)

Description	Mouse monoclonal antibody to CENPE
Species/Host	Mouse
Reactivity	Human
Conjugation	Unconjugated
Tested Applications	FC, ICC, IP
Immunogen	Recombinant full length CENPE protein (human)
Target	CENPE
Preservatives	Purified antibody (from supernatant) containing PBS 0.1% sodium azide;
Concentration	1mg/ml
Note	For research use only
Application notes	SP2/0
Isotype	IgG1 kappa
Clonality	Monoclonal
Uniprot ID	q02224
Entrez	1062
Dilution Range	Optimal antibody dilution should be determined by titration, however as a guideline try the following: IP: Use at 3µg/mg of lysate. WB: Use a concentration of 0.5 - 1µg/ml. Predicted molecular weight: 312 kDa. Only suitable for WB if IP is performed first Flow Cyt: Use 1µg for 106 cells
Expiration Date	12 months from date of receipt.



Confocal immunofluorescence analysis of ...