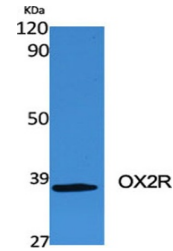


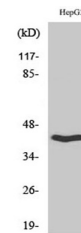
Product Datasheet

OX2R antibody (orb765964)

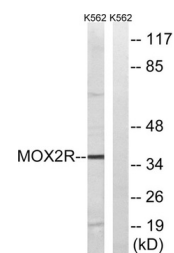
Description	Rabbit polyclonal antibody to OX2R
Species/Host	Rabbit
Reactivity	Human
Conjugation	Unconjugated
Tested Applications	ELISA, WB
Immunogen	The antiserum was produced against synthesized peptide derived from human MOX2R. AA range:241-290
Preservatives	PBS with 0.02% sodium azide and 50% glycerol pH 7.4.
Concentration	1 mg/ml
Storage	Maintain refrigerated at 2-8°C for up to 2 weeks. For long term storage store at -20°C in small aliquots to prevent freeze-thaw cycles.
Note	For research use only
Isotype	IgG
Clonality	Polyclonal
MW	37
Expiration Date	12 months from date of receipt.



Western Blot analysis of K562 cells using OX2R antibody.



Western Blot analysis of HepG2 cells using OX2R antibody.



Western blot analysis of lysates from K562 cells using OX2R antibody.