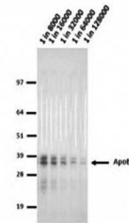


## Product Datasheet

### Apolipoprotein E4 antibody (orb76586)

<b>Description</b>	Mouse monoclonal antibody to Apolipoprotein E4
<b>Species/Host</b>	Mouse
<b>Reactivity</b>	Human
<b>Conjugation</b>	Unconjugated
<b>Tested Applications</b>	DOT, ELISA, IP, WB
<b>Immunogen</b>	Synthetic peptide corresponding to Human Apolipoprotein E4 conjugated to Keyhole Limpet Haemocyanin (KLH) (Immunogen sequence: ApoE4 peptide).
<b>Target</b>	Apolipoprotein E4
<b>Preservatives</b>	Purified antibody (from supernatant) containing PBS + 0.1% sodium azide
<b>Concentration</b>	1mg/ml
<b>Note</b>	For research use only
<b>Application notes</b>	X63-Ag8.653
<b>Isotype</b>	IgG1
<b>Clonality</b>	Monoclonal
<b>Uniprot ID</b>	p02649
<b>Entrez</b>	<b>348</b>
<b>Dilution Range</b>	Optimal antibody dilution should be determined by titration, however as a guideline try up to 1:64,000 for western blot
<b>Expiration Date</b>	12 months from date of receipt.



Western blot analysis of Apot4 cells using...