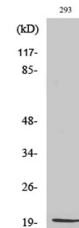


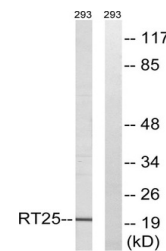
Product Datasheet

MRP-S25 antibody (orb765724)

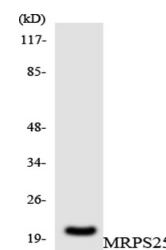
Description	Rabbit polyclonal antibody to MRP-S25
Species/Host	Rabbit
Reactivity	Human, Mouse, Rat
Conjugation	Unconjugated
Tested Applications	ELISA, WB
Immunogen	The antiserum was produced against synthesized peptide derived from human MRPS25. AA range:124-173
Preservatives	PBS with 0.02% sodium azide and 50% glycerol pH 7.4.
Concentration	1 mg/ml
Storage	Store at -20°C. Avoid repeated freeze-thaw cycles.
Note	For research use only
Isotype	IgG
Clonality	Polyclonal
MW	20
Expiration Date	12 months from date of receipt.



Western Blot analysis of various cells U...



Western blot analysis of lysates from 29...



Western blot analysis of the lysates fro...