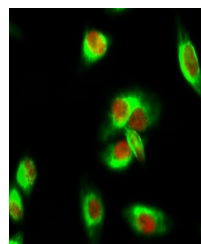


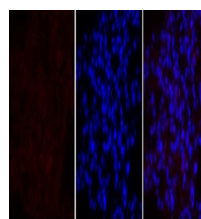
Product Datasheet

MEK-1/2 antibody (orb765647)

Description	Rabbit polyclonal antibody to MEK-1/2
Species/Host	Rabbit
Reactivity	Human, Monkey, Mouse, Rat
Conjugation	Unconjugated
Tested Applications	ELISA, IF, IHC-P, WB
Immunogen	The antiserum was produced against synthesized peptide derived from human MEK1/2. AA range:189-238
Preservatives	PBS with 0.02% sodium azide and 50% glycerol pH 7.4.
Concentration	1 mg/ml
Storage	Maintain refrigerated at 2-8°C for up to 2 weeks. For long term storage store at -20°C in small aliquots to prevent freeze-thaw cycles.
Note	For research use only
Isotype	IgG
Clonality	Polyclonal
MW	43
Expiration Date	12 months from date of receipt.

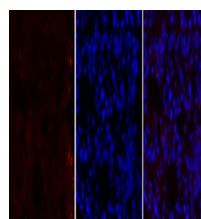


Immunofluorescence analysis of HeLa cell...



Immunofluorescence analysis of rat-lung

...



Immunofluorescence analysis of rat-lung

...