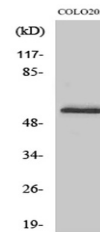


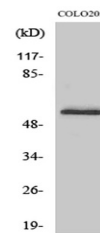
Product Datasheet

Glucagon Receptor antibody (orb765308)

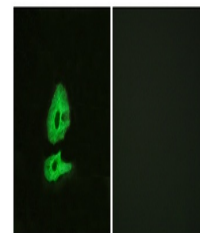
Description	Rabbit polyclonal antibody to Glucagon Receptor
Species/Host	Rabbit
Reactivity	Human, Mouse, Rat
Conjugation	Unconjugated
Tested Applications	ELISA, IF, WB
Immunogen	The antiserum was produced against synthesized peptide derived from human GLR. AA range:95-144
Preservatives	PBS with 0.02% sodium azide and 50% glycerol pH 7.4.
Concentration	1 mg/ml
Storage	Store at -20°C. Avoid repeated freeze-thaw cycles.
Note	For research use only
Isotype	IgG
Clonality	Polyclonal
MW	54
Expiration Date	12 months from date of receipt.



Western Blot analysis of various cells u...



Western Blot analysis of COLO205 cells u...



Immunofluorescence analysis of HeLa cell...