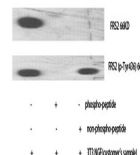


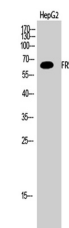
Product Datasheet

FRS2 antibody (orb765251)

Description	Rabbit polyclonal antibody to FRS2
Species/Host	Rabbit
Reactivity	Human, Mouse
Conjugation	Unconjugated
Tested Applications	ELISA, WB
Immunogen	The antiserum was produced against synthesized peptide derived from human FRS2. AA range:162-211
Preservatives	PBS with 0.02% sodium azide and 50% glycerol pH 7.4.
Concentration	1 mg/ml
Storage	Maintain refrigerated at 2-8°C for up to 2 weeks. For long term storage store at -20°C in small aliquots to prevent freeze-thaw cycles.
Note	For research use only
Isotype	IgG
Clonality	Polyclonal
MW	65
Expiration Date	12 months from date of receipt.



Western Blot analysis of various cell lines using FRS2 antibody.



Western Blot analysis of HepG2 cells using FRS2 antibody.



Western blot analysis of KB cells using FRS2 antibody.