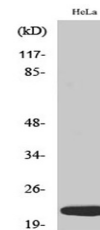


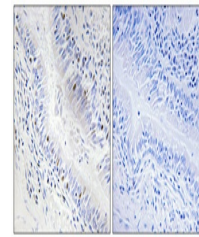
Product Datasheet

Dynein LC 1 antibody (orb765084)

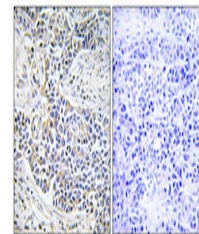
Description	Rabbit polyclonal antibody to Dynein LC 1
Species/Host	Rabbit
Reactivity	Human, Mouse
Conjugation	Unconjugated
Tested Applications	ELISA, IHC-P, WB
Immunogen	The antiserum was produced against synthesized peptide derived from human DNAL1. AA range:121-170
Preservatives	PBS with 0.02% sodium azide and 50% glycerol pH 7.4.
Concentration	1 mg/ml
Storage	Store at -20°C. Avoid repeated freeze-thaw cycles.
Note	For research use only
Isotype	IgG
Clonality	Polyclonal
MW	22
Expiration Date	12 months from date of receipt.



Western Blot analysis of various cells u...



Immunohistochemical analysis of paraffin...



Immunohistochemical analysis of paraffin...