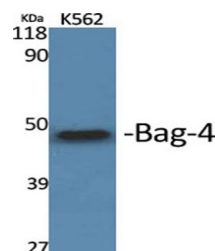


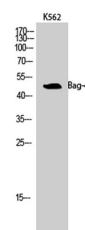
Product Datasheet

Bag-4 antibody (orb764620)

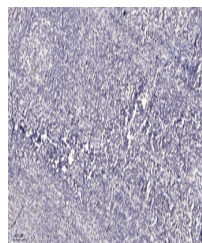
Description	Rabbit polyclonal antibody to Bag-4
Species/Host	Rabbit
Reactivity	Human, Mouse, Rat
Conjugation	Unconjugated
Tested Applications	ELISA, IHC-P, WB
Immunogen	Synthesized peptide derived from the C-terminal region of human Bag-4.
Preservatives	PBS with 0.02% sodium azide and 50% glycerol pH 7.4.
Concentration	1 mg/ml
Storage	Maintain refrigerated at 2-8°C for up to 2 weeks. For long term storage store at -20°C in small aliquots to prevent freeze-thaw cycles.
Note	For research use only
Isotype	IgG
Clonality	Polyclonal
MW	50
Expiration Date	12 months from date of receipt.



Western Blot analysis of various cells u...



Western Blot analysis of K562 cells usin...



Immunohistochemical analysis of paraffin...