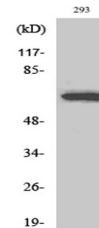


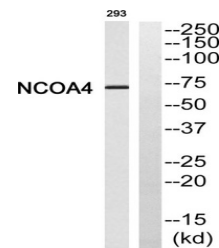
Product Datasheet

ARA70 antibody (orb764567)

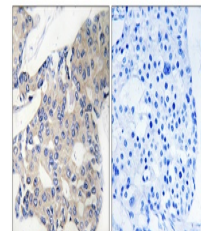
Description	Rabbit polyclonal antibody to ARA70
Species/Host	Rabbit
Reactivity	Human, Mouse, Rat
Conjugation	Unconjugated
Tested Applications	ELISA, IHC-P, WB
Immunogen	Synthesized peptide derived from ARA70 . at AA range: 320-400
Preservatives	PBS with 0.02% sodium azide and 50% glycerol pH 7.4.
Concentration	1 mg/ml
Storage	Store at -20°C. Avoid repeated freeze-thaw cycles.
Note	For research use only
Isotype	IgG
Clonality	Polyclonal
MW	70
Expiration Date	12 months from date of receipt.



Western Blot analysis of various cells u...



Western blot analysis of NCOA4 Antibody....



Immunohistochemistry analysis of paraff...