

Product Datasheet

Lyn (phospho-Tyr508) antibody (orb764349)

Description Rabbit polyclonal antibody to Lyn (phospho-Tyr508)

Reactivity Human, Mouse, Rat

Conjugation Unconjugated

Tested Applications ELISA, IHC-P, WB

Immunogen The antiserum was produced against synthesized peptide derived from human Lyn around the phosphorylation site of Tyr507. AA range:463-512

Preservatives PBS with 0.02% sodium azide and 50% glycerol pH 7.4.

Concentration 1 mg/ml

Storage Maintain refrigerated at 2-8°C for up to 2 weeks. For long term storage store at -20°C in small aliquots to prevent freeze-thaw cycles.

Note For research use only

Isotype IgG

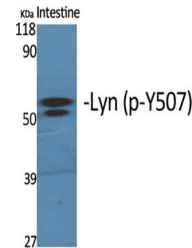
Clonality Polyclonal

Source Rabbit

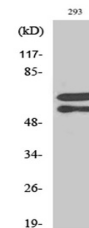
MW 53,56

Dilution Range Western Blot: 1/500 - 1/2000. Immunohistochemistry: 1/100 - 1/300. ELISA: 1/10000. Not yet tested in other applications.

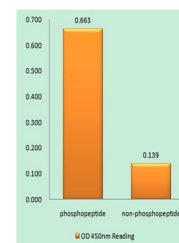
Expiration Date 12 months from date of receipt.



Western Blot analysis of various cells U...



Western Blot analysis of 293 cells using...



Enzyme-Linked Immunosorbent Assay (Phosp...