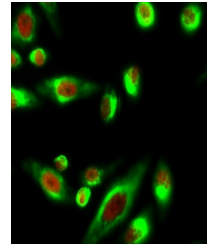


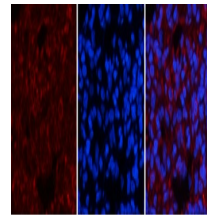
Product Datasheet

Smad3 (phospho-Ser425) antibody (orb764334)

Description	Rabbit polyclonal antibody to Smad3 (phospho-Ser425)
Reactivity	Human, Mouse, Rat
Conjugation	Unconjugated
Tested Applications	ELISA, IF, IHC-P, WB
Immunogen	The antiserum was produced against synthesized peptide derived from human Smad3 around the phosphorylation site of Ser425. AA range:376-425
Preservatives	PBS with 0.02% sodium azide and 50% glycerol pH 7.4.
Concentration	1 mg/ml
Storage	Maintain refrigerated at 2-8°C for up to 2 weeks. For long term storage store at -20°C in small aliquots to prevent freeze-thaw cycles.
Note	For research use only
Isotype	IgG
Clonality	Polyclonal
Source	Rabbit
MW	58
Dilution Range	IF: 1:50-200 Western Blot: 1/500 - 1/2000. Immunohistochemistry: 1/100 - 1/300. ELISA: 1/40000. Not yet tested in other applications.
Expiration Date	12 months from date of receipt.

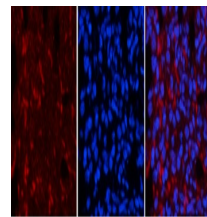


Immunofluorescence analysis of Hela cell...



Immunofluorescence analysis of rat-lung

...



Immunofluorescence analysis of rat-lung

...