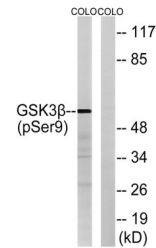


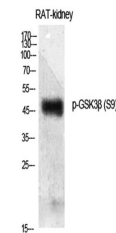
Product Datasheet

GSK3beta (phospho-Ser9) antibody (orb764295)

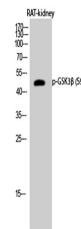
Description	Rabbit polyclonal antibody to GSK3beta (phospho-Ser9)
Species/Host	Rabbit
Reactivity	Human, Mouse, Rat
Conjugation	Unconjugated
Tested Applications	ELISA, IHC-P, WB
Immunogen	Synthesized phospho-peptide around the phosphorylation site of human GSK3β (phospho Ser9)
Preservatives	PBS with 0.02% sodium azide and 50% glycerol pH 7.4.
Concentration	1 mg/ml
Storage	Store at -20°C. Avoid repeated freeze-thaw cycles.
Note	For research use only
Isotype	IgG
Clonality	Polyclonal
MW	47
Expiration Date	12 months from date of receipt.



Western blot analysis of GSK3β (Phospho-Ser9)



Western Blot analysis of various cells u...



Western Blot analysis of RAT-kidney cell...