

## Product Datasheet

### IKKalpha (phospho-Thr23) antibody (orb764211)

**Description** Rabbit polyclonal antibody to IKKalpha (phospho-Thr23)

**Species/Host** Rabbit

**Reactivity** Human, Mouse, Rat

**Conjugation** Unconjugated

**Tested Applications** ELISA, IHC-P, WB

**Immunogen** The antiserum was produced against synthesized peptide derived from human IKK-alpha around the phosphorylation site of Thr23. AA range:15-64

**Preservatives** PBS with 0.02% sodium azide and 50% glycerol pH 7.4.

**Concentration** 1 mg/ml

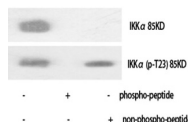
**Storage** Maintain refrigerated at 2-8°C for up to 2 weeks. For long term storage store at -20°C in small aliquots to prevent freeze-thaw cycles.

**Note** For research use only

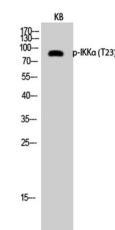
**Isotype** IgG

**Clonality** Polyclonal

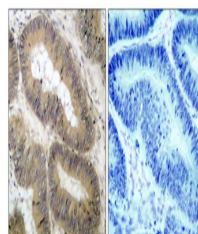
**Expiration Date** 12 months from date of receipt.



Western Blot analysis of various cells u...



Western Blot analysis of KB cells using ...



Immunohistochemistry analysis of paraffi...