
Product Datasheet

IGF-1R (phospho-Tyr1165/Y1166) antibody (orb764210)

Description

Rabbit polyclonal antibody to IGF-IR (phospho-

(kD)

Species/Host

Rabbit

Reactivity

Human, Monkey, Mouse, Rat

Conjugation

Unconjugated

Tested Applications

ELISA, WB

Immunogen

The antiserum was produced against synthesized peptide derived from human IGF1R around the phosphorylation site of Tyr1165/Tyr1166. AA range:1131-1180

Preservatives

PBS with 0.02% sodium azide and 50% glycerol pH 7.4.

Concentration

1 mg/ml

Storage

Maintain refrigerated at 2-8°C for up to 2 weeks. For long term storage store at -20°C in small aliquots to prevent freeze-thaw cycles.

Note

For research use only

Isotype

IgG

Clonality

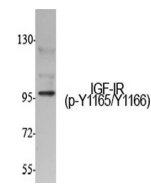
Polyclonal

MW

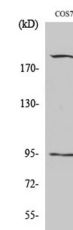
156

Expiration Date

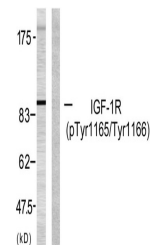
12 months from date of receipt.



Western Blot analysis of various cells u...



Western Blot analysis of COS7 cells usin...



Western blot analysis of lysates from 29...