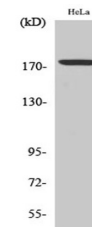


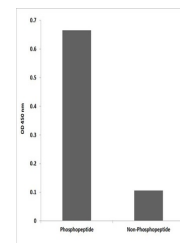
Product Datasheet

Erbin (phospho-Tyr1104) antibody (orb764182)

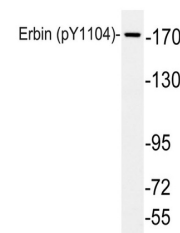
| | |
|----------------------------|---|
| Description | Rabbit polyclonal antibody to Erbin (phospho-Tyr1104) |
| Species/Host | Rabbit |
| Reactivity | Human |
| Conjugation | Unconjugated |
| Tested Applications | ELISA, WB |
| Immunogen | Synthesized phospho-peptide around the phosphorylation site of human Erbin (phospho Tyr1104) |
| Preservatives | PBS with 0.02% sodium azide and 50% glycerol pH 7.4. |
| Concentration | 1 mg/ml |
| Storage | Maintain refrigerated at 2-8°C for up to 2 weeks. For long term storage store at -20°C in small aliquots to prevent freeze-thaw cycles. |
| Note | For research use only |
| Isotype | IgG |
| Clonality | Polyclonal |
| MW | 172 |
| Expiration Date | 12 months from date of receipt. |



Western Blot analysis of various cells U...



Enzyme-Linked Immunosorbent Assay (Phosp...



Western blot analysis of lysates from He...