

Product Datasheet

Cytokeratin 8 (phospho-Ser73) antibody (orb764171)

Description Rabbit polyclonal antibody to Cytokeratin 8 (phospho-Ser73)

Species/Host Rabbit

Reactivity Human, Mouse

Conjugation Unconjugated

Tested Applications ELISA, IHC-P, WB

Immunogen The antiserum was produced against synthesized peptide derived from human Keratin 8 around the phosphorylation site of Ser73. AA range:41-90

Preservatives PBS with 0.02% sodium azide and 50% glycerol pH 7.4.

Concentration 1 mg/ml

Storage Maintain refrigerated at 2-8°C for up to 2 weeks. For long term storage store at -20°C in small aliquots to prevent freeze-thaw cycles.

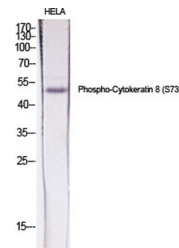
Note For research use only

Isotype IgG

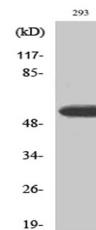
Clonality Polyclonal

MW 55

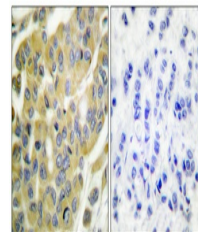
Expiration Date 12 months from date of receipt.



Western Blot analysis of various cells u...



Western Blot analysis of 293 cells using...



Immunohistochemical analysis of paraffin...