

Product Datasheet

Bcl-2 (phospho-Ser70) antibody (orb764147)

Description Rabbit polyclonal antibody to Bcl-2 (phospho-Ser70)

Species/Host Rabbit

Reactivity Human, Monkey

Conjugation Unconjugated

Tested Applications ELISA, IHC-P, IP, WB

Immunogen The antiserum was produced against synthesized peptide derived from human BCL-2 around the phosphorylation site of Ser70. AA range:41-90

Preservatives PBS with 0.02% sodium azide and 50% glycerol pH 7.4.

Concentration 1 mg/ml

Storage Maintain refrigerated at 2-8°C for up to 2 weeks. For long term storage store at -20°C in small aliquots to prevent freeze-thaw cycles.

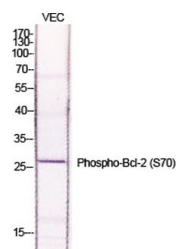
Note For research use only

Isotype IgG

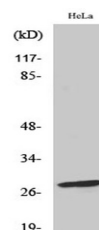
Clonality Polyclonal

MW 26

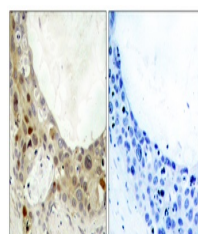
Expiration Date 12 months from date of receipt.



Western Blot analysis of various cells u...



Western Blot analysis of HeLa cells usin...



Immunohistochemistry analysis of paraffi...