

Product Datasheet

ATF-2 (phospho-Ser112) antibody (orb764140)

Description Rabbit polyclonal antibody to ATF-2 (phospho-Ser112)

Species/Host Rabbit

Reactivity Human, Mouse, Rat

Conjugation Unconjugated

Tested Applications ELISA, IHC-P, IP, WB

Immunogen The antiserum was produced against synthesized peptide derived from human ATF2 around the phosphorylation site of Ser112 or 94. AA range:79-128

Preservatives PBS with 0.02% sodium azide and 50% glycerol pH 7.4.

Concentration 1 mg/ml

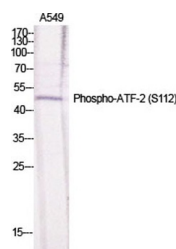
Storage Maintain refrigerated at 2-8°C for up to 2 weeks. For long term storage store at -20°C in small aliquots to prevent freeze-thaw cycles.

Note For research use only

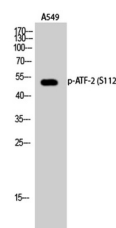
Isotype IgG

Clonality Polyclonal

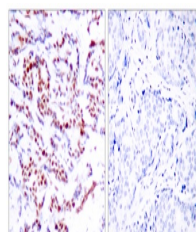
Expiration Date 12 months from date of receipt.



Western Blot analysis of various cells u...



Western Blot analysis of A549 cells usin...



Immunohistochemistry analysis of paraffi...