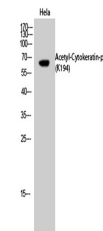


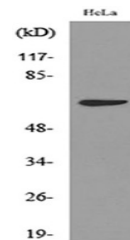
Product Datasheet

Cytokeratin-pan (Acetyl Lys194) antibody (orb763992)

Description	Rabbit polyclonal antibody to Cytokeratin-pan (Acetyl Lys194)
Species/Host	Rabbit
Reactivity	Human, Mouse, Rat
Conjugation	Unconjugated
Tested Applications	ELISA, WB
Immunogen	The antiserum was produced against synthesized Acetyl-peptide derived from human Keratin-pan around the Acetylation site of Lys194. AA range:151-200
Preservatives	PBS with 0.02% sodium azide and 50% glycerol pH 7.4.
Concentration	1 mg/ml
Storage	Maintain refrigerated at 2-8°C for up to 2 weeks. For long term storage store at -20°C in small aliquots to prevent freeze-thaw cycles.
Note	For research use only
Isotype	IgG
Clonality	Polyclonal
MW	65
Expiration Date	12 months from date of receipt.



Western Blot analysis of HeLa cells using...



Western blot analysis of lysate from HeL...