

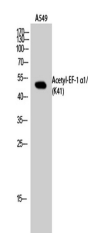
Product Datasheet

EF-1 alpha1/2 (Acetyl Lys41) antibody (orb763978)

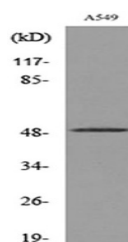
Description	Rabbit polyclonal antibody to EF-1 alpha1/2 (Acetyl Lys41)
Species/Host	Rabbit
Reactivity	Human, Mouse, Rat
Conjugation	Unconjugated
Tested Applications	ELISA, WB
Immunogen	The antiserum was produced against synthesized Acetyl-peptide derived from human EE1A around the Acetylation site of Lys41. AA range:1-50
Preservatives	PBS with 0.02% sodium azide and 50% glycerol pH 7.4.
Concentration	1 mg/ml
Storage	Maintain refrigerated at 2-8°C for up to 2 weeks. For long term storage store at -20°C in small aliquots to prevent freeze-thaw cycles.
Note	For research use only
Isotype	IgG
Clonality	Polyclonal
MW	50
Expiration Date	12 months from date of receipt.



Western Blot analysis of A549 cells using...



Western Blot analysis of A549 cells using...



Western blot analysis of lysate from A54...