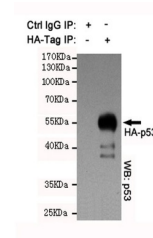


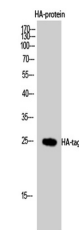
Product Datasheet

HA-tag antibody (orb763952)

Description	Rabbit polyclonal antibody to HA-tag
Species/Host	Rabbit
Reactivity	Other
Conjugation	Unconjugated
Tested Applications	ELISA, IP, WB
Immunogen	HA synthetic peptide conjugated to KLH.
Preservatives	PBS with 0.02% sodium azide and 50% glycerol pH 7.4.
Concentration	1 mg/ml
Storage	Maintain refrigerated at 2-8°C for up to 2 weeks. For long term storage store at -20°C in small aliquots to prevent freeze-thaw cycles.
Note	For research use only
Isotype	IgG
Clonality	Polyclonal
MW	15
Expiration Date	12 months from date of receipt.



IP analysis of HA-tag Polyclonal Antibod...



Western Blot analysis using HA-tag Polyc...